

LA CARIMALI

SPARE PARTS CATALOGUE



Bubble

TABLE OF CONTENTS

REAR AND SIDE BODY SECTION..... (NT.05614-00)..... 4

FRONT BODY SECTION (NT.05615-00)..... 6

CUP WARMER..... (NT.05616-00) 8

CONTROL PANEL..... (NT.05617-00)..... 10

ELECTRICAL COMPONENTS..... (NT.05618-00)..... 12

CHASSIS..... (NT.05619-00)..... 14

WATER INLET-OUTLET..... (NT.05620-00)..... 16

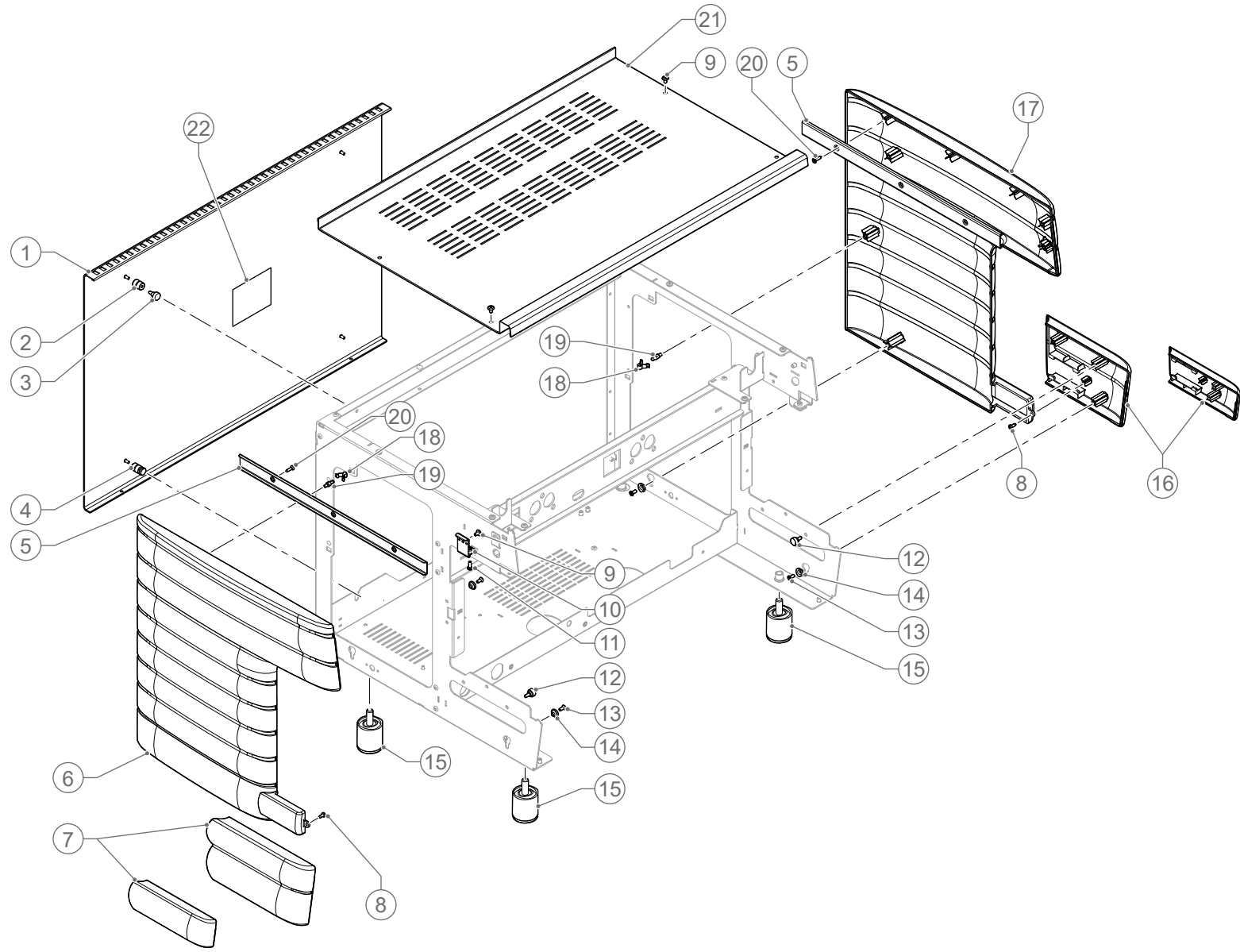
HYDRAULIC SYSTEM..... (NT.05621-00)..... 18

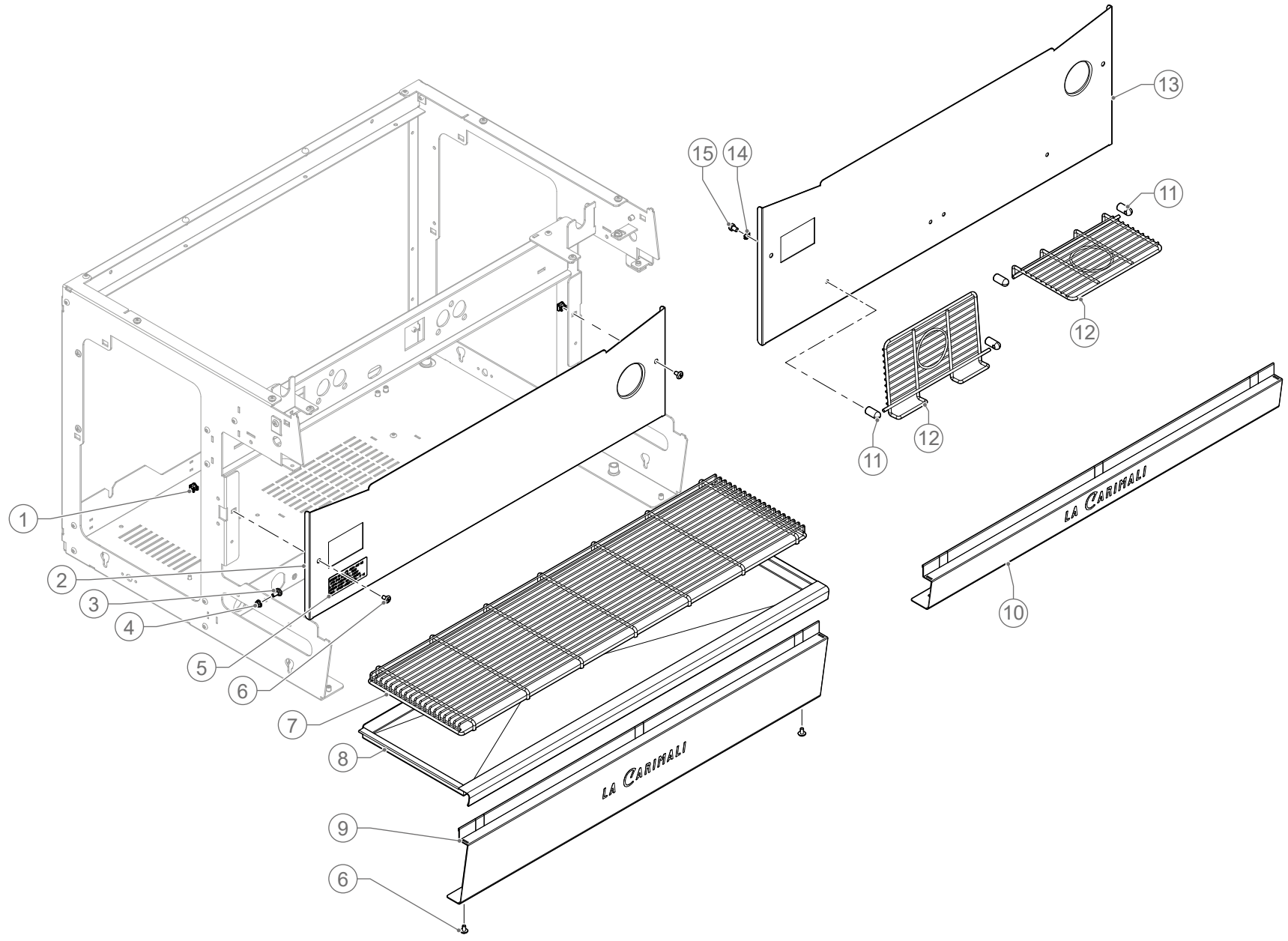
BOILER 1 GR..... (NT.05643-00)..... 20

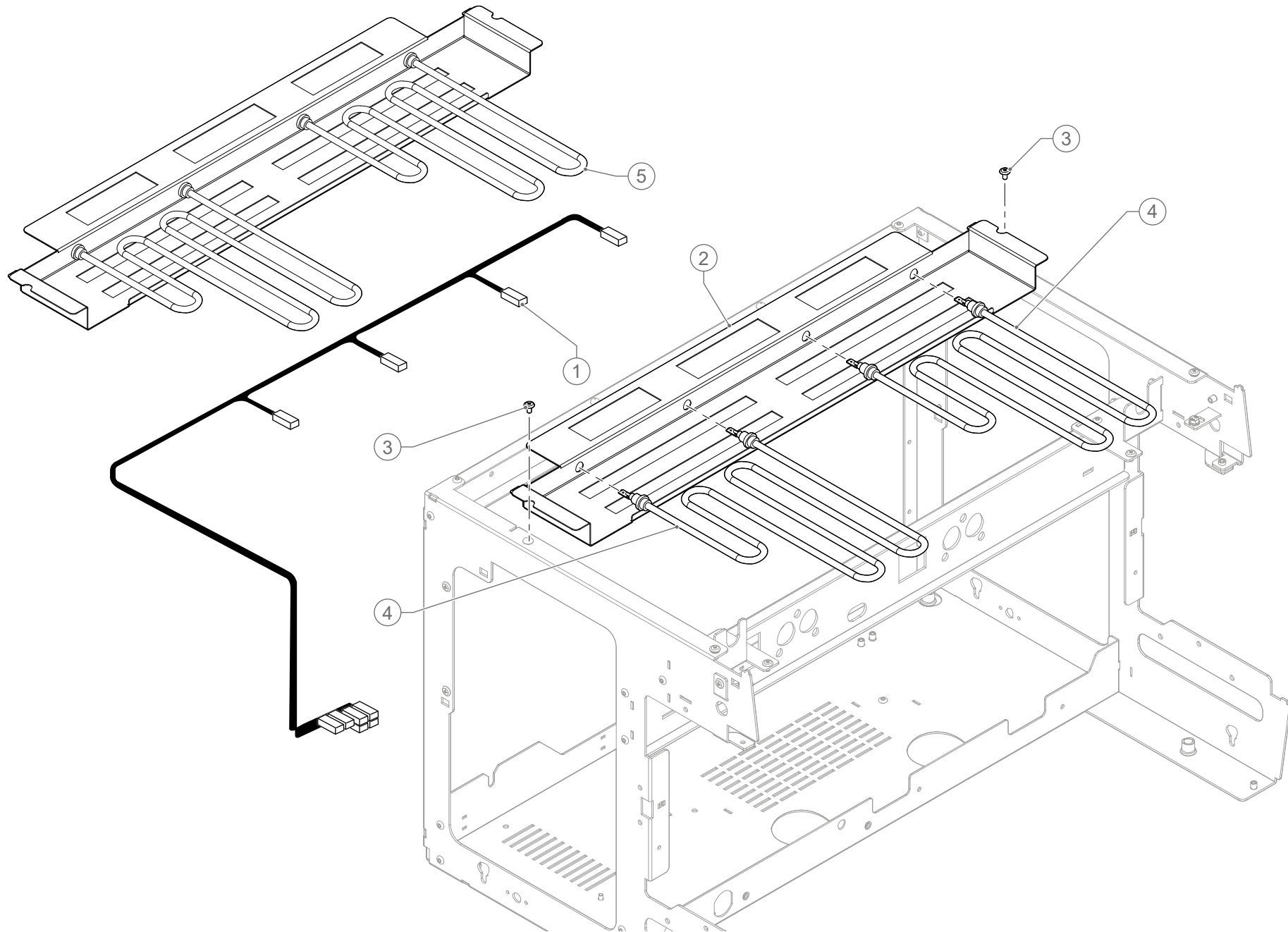
BOILER 2/3 GR..... (NT.05622-00)..... 22

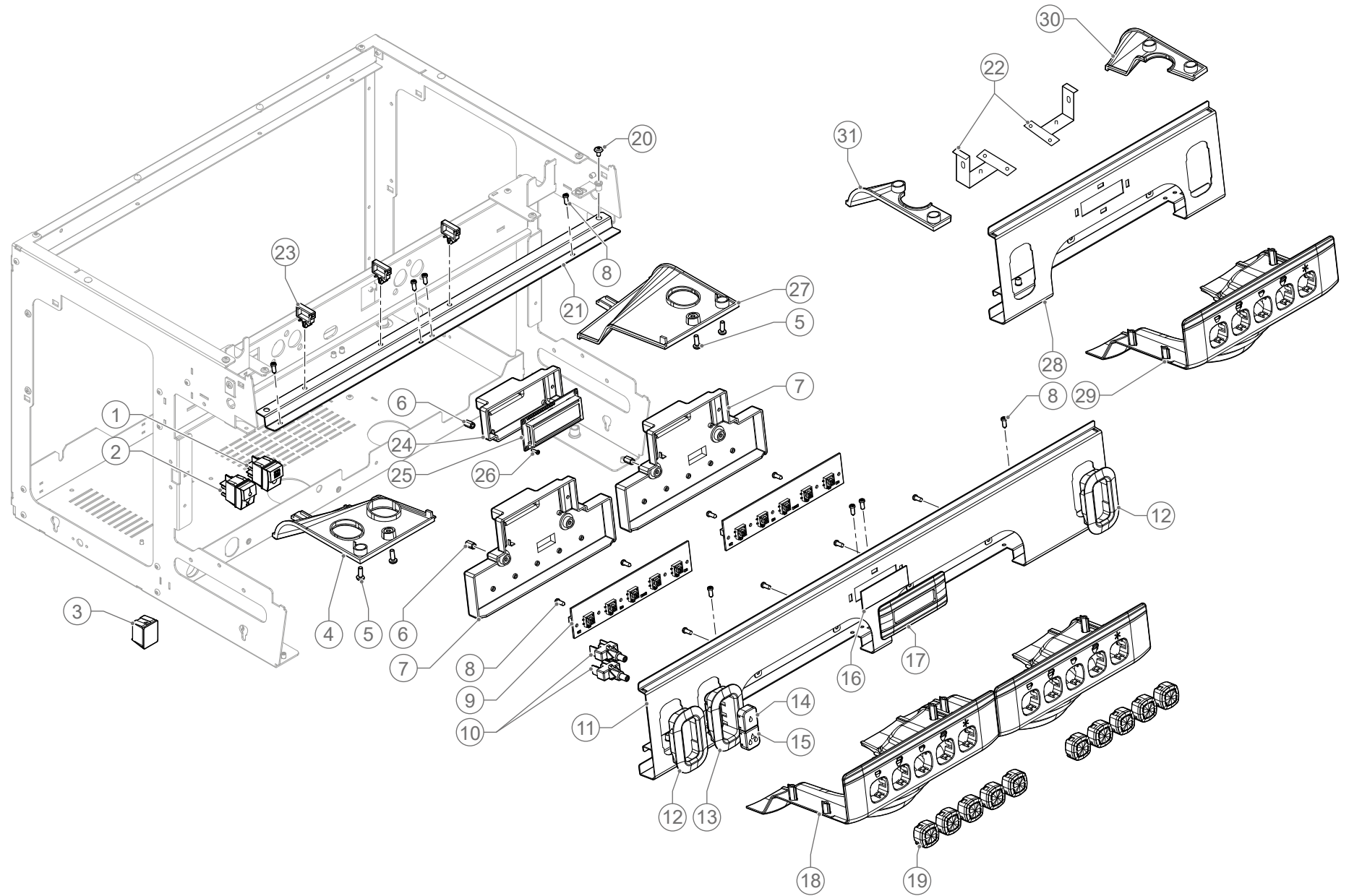
COFFEE GROUP..... (NT.05623-00)..... 24

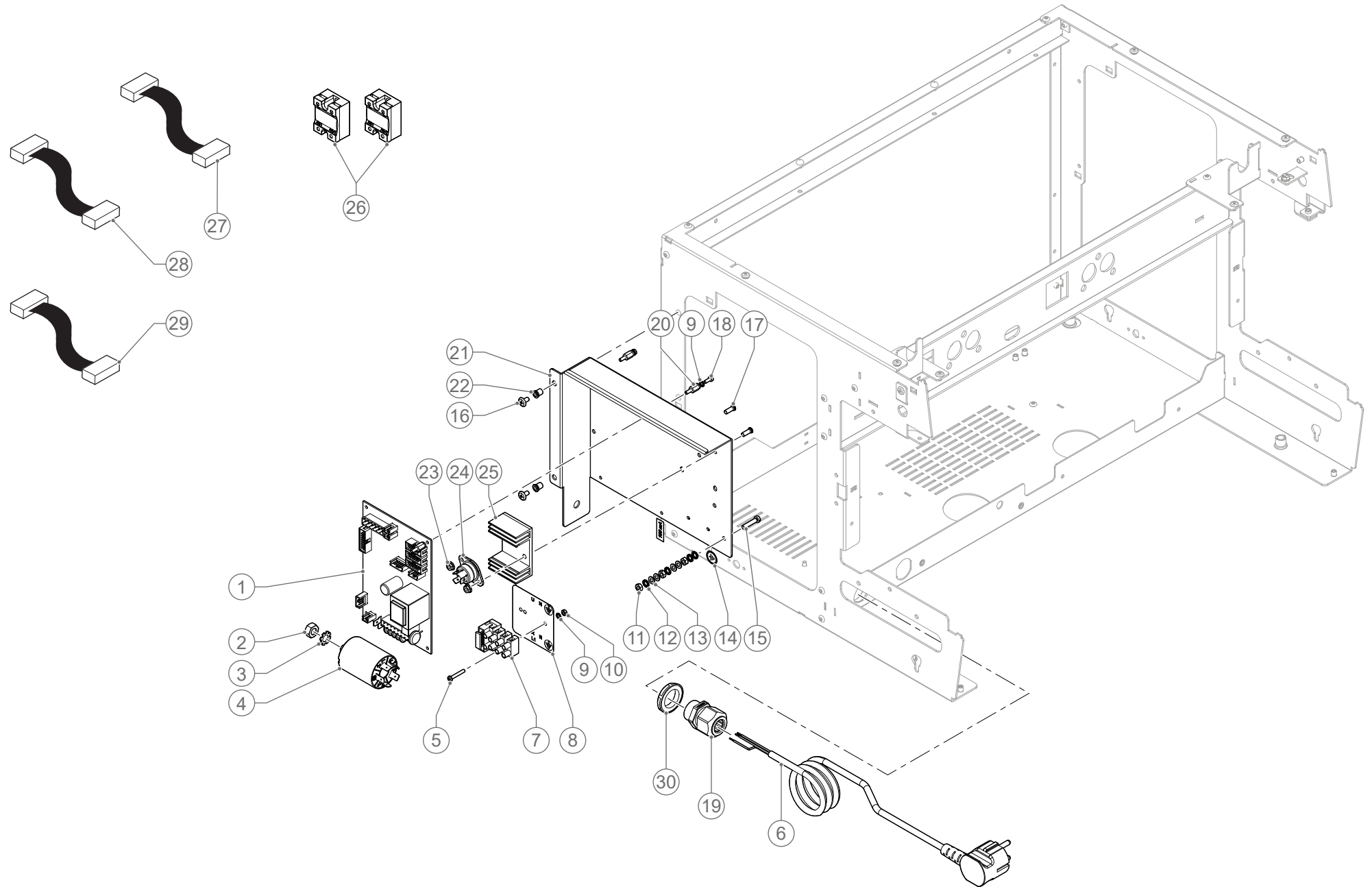
HOT WATER WAND AND STEAM WAND..... (NT.05624-00)..... 26

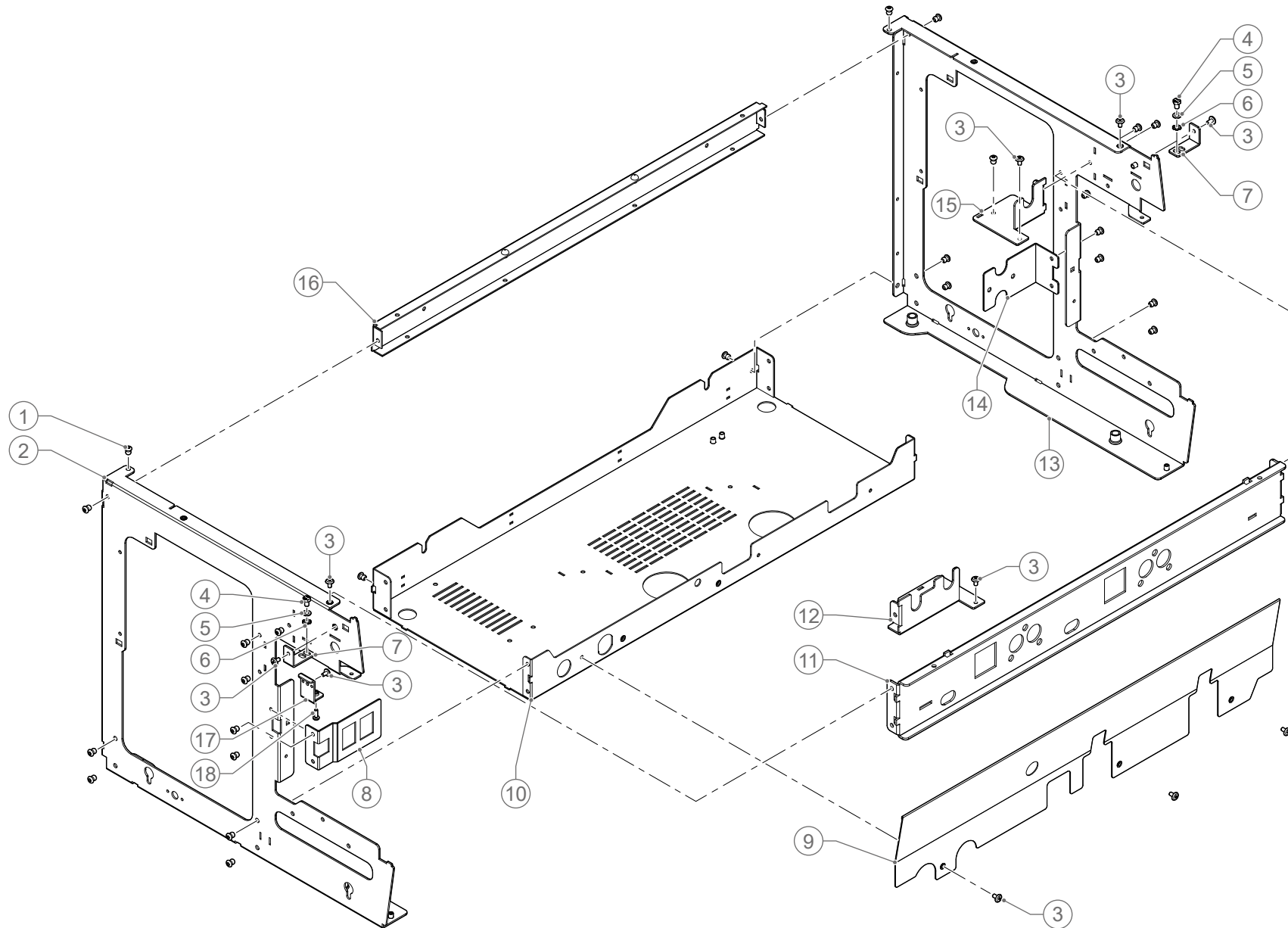


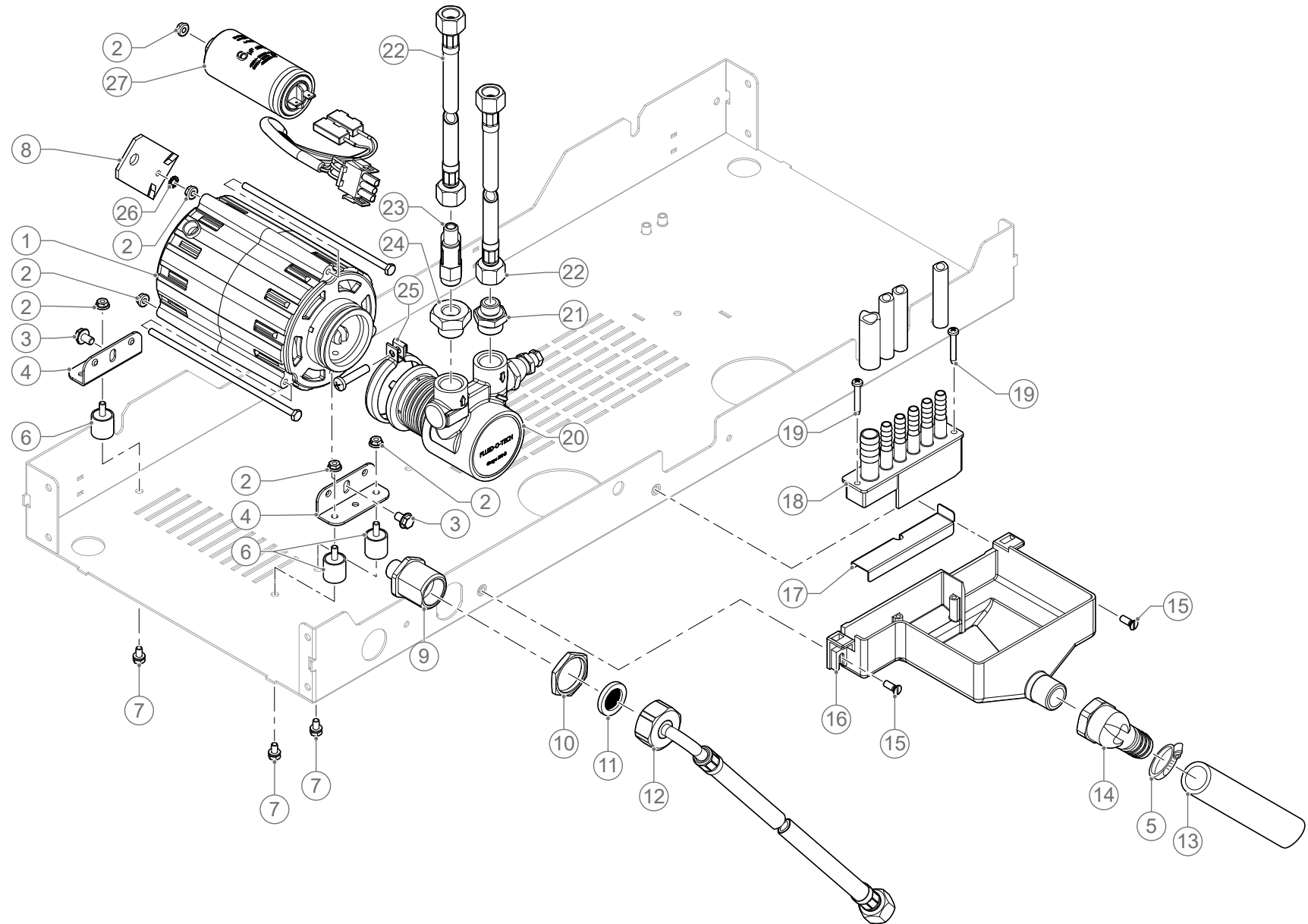


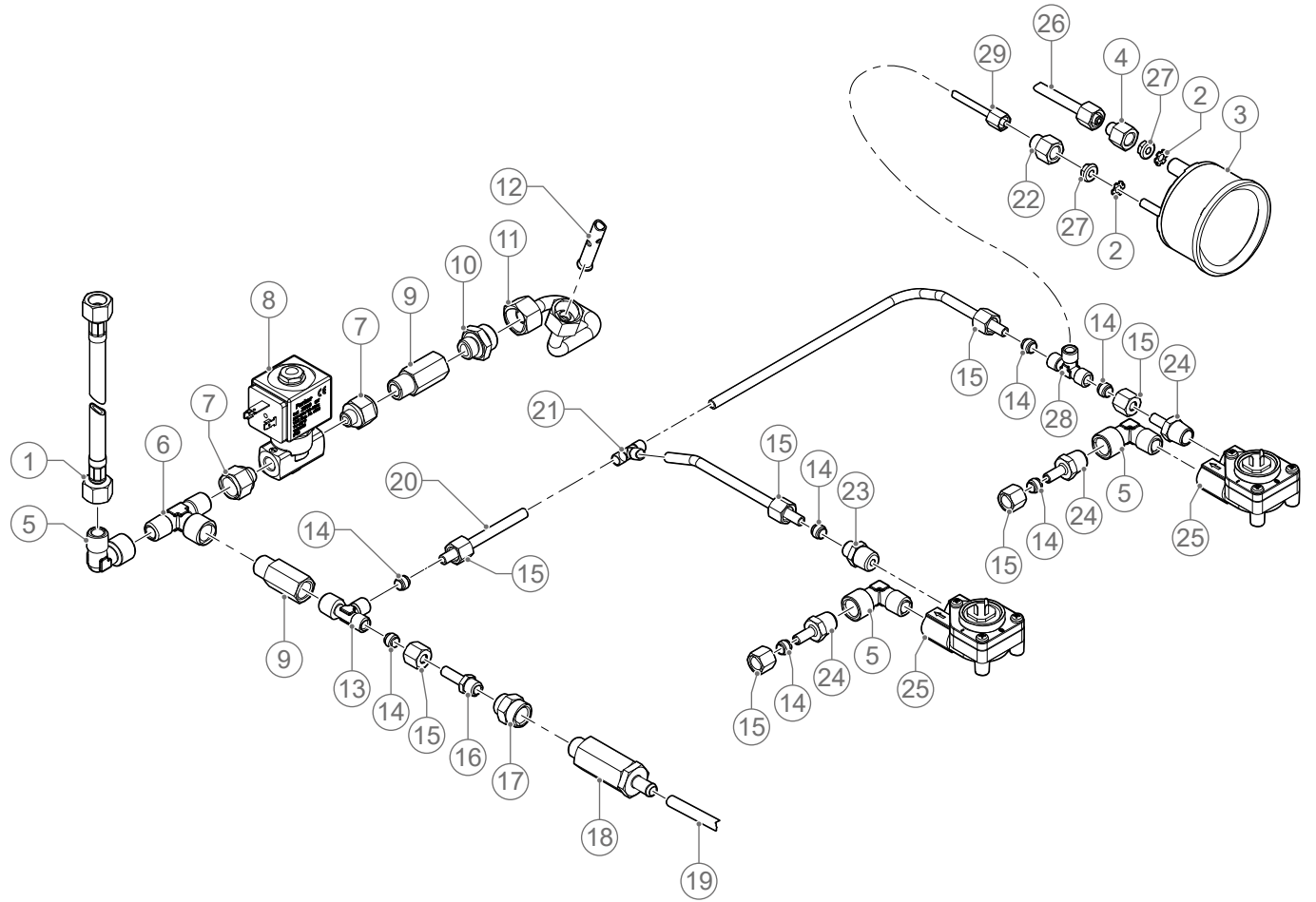
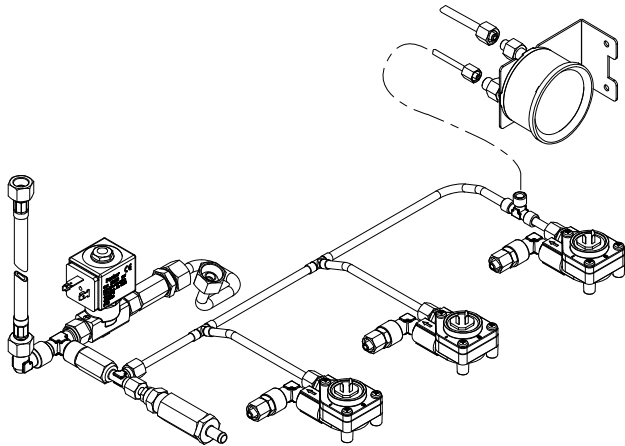
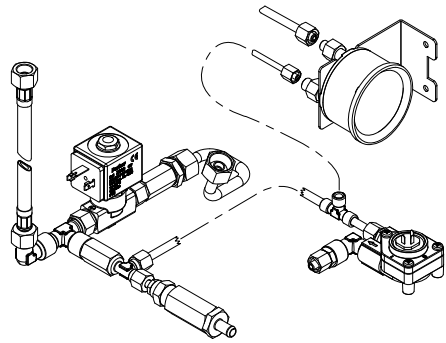


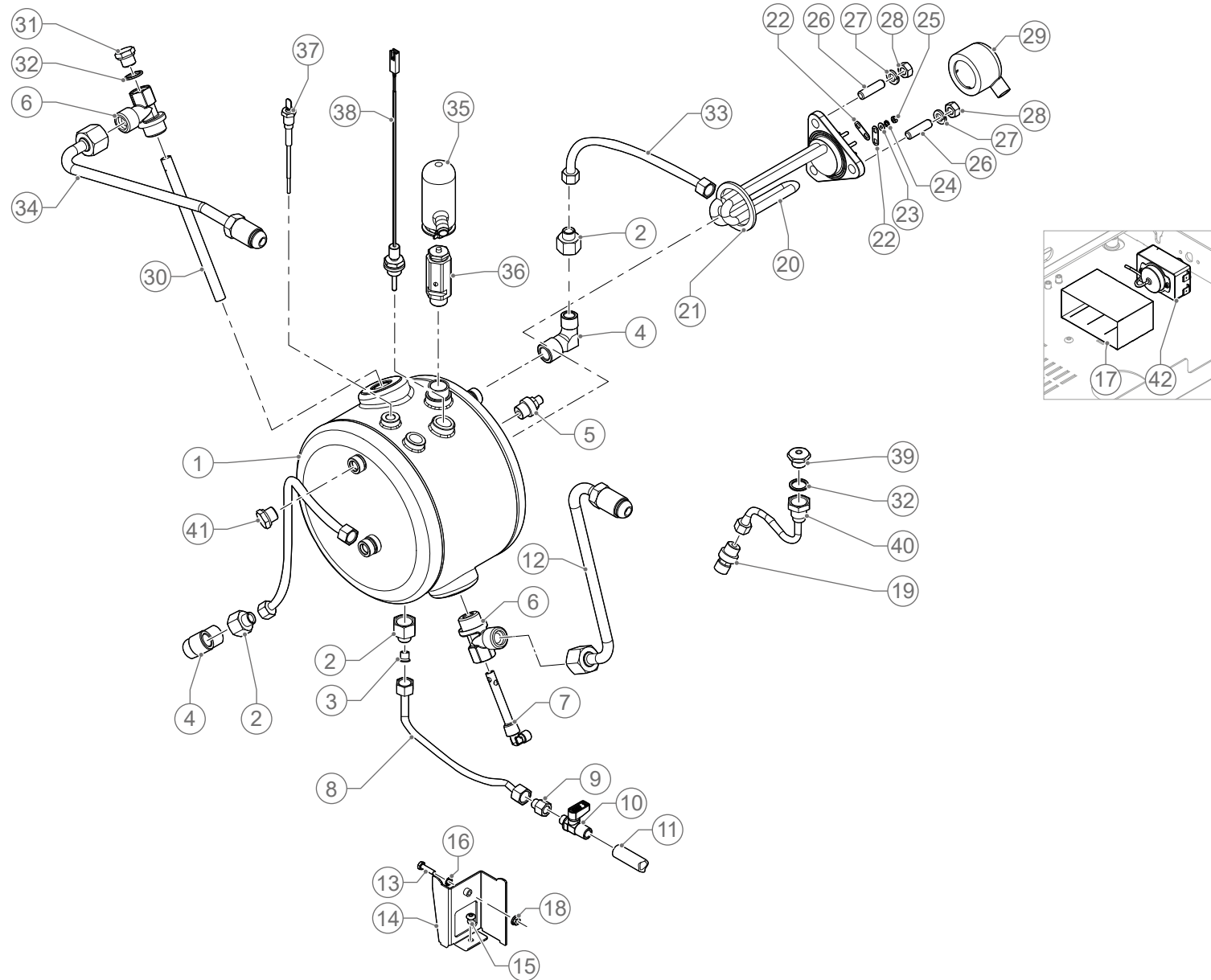


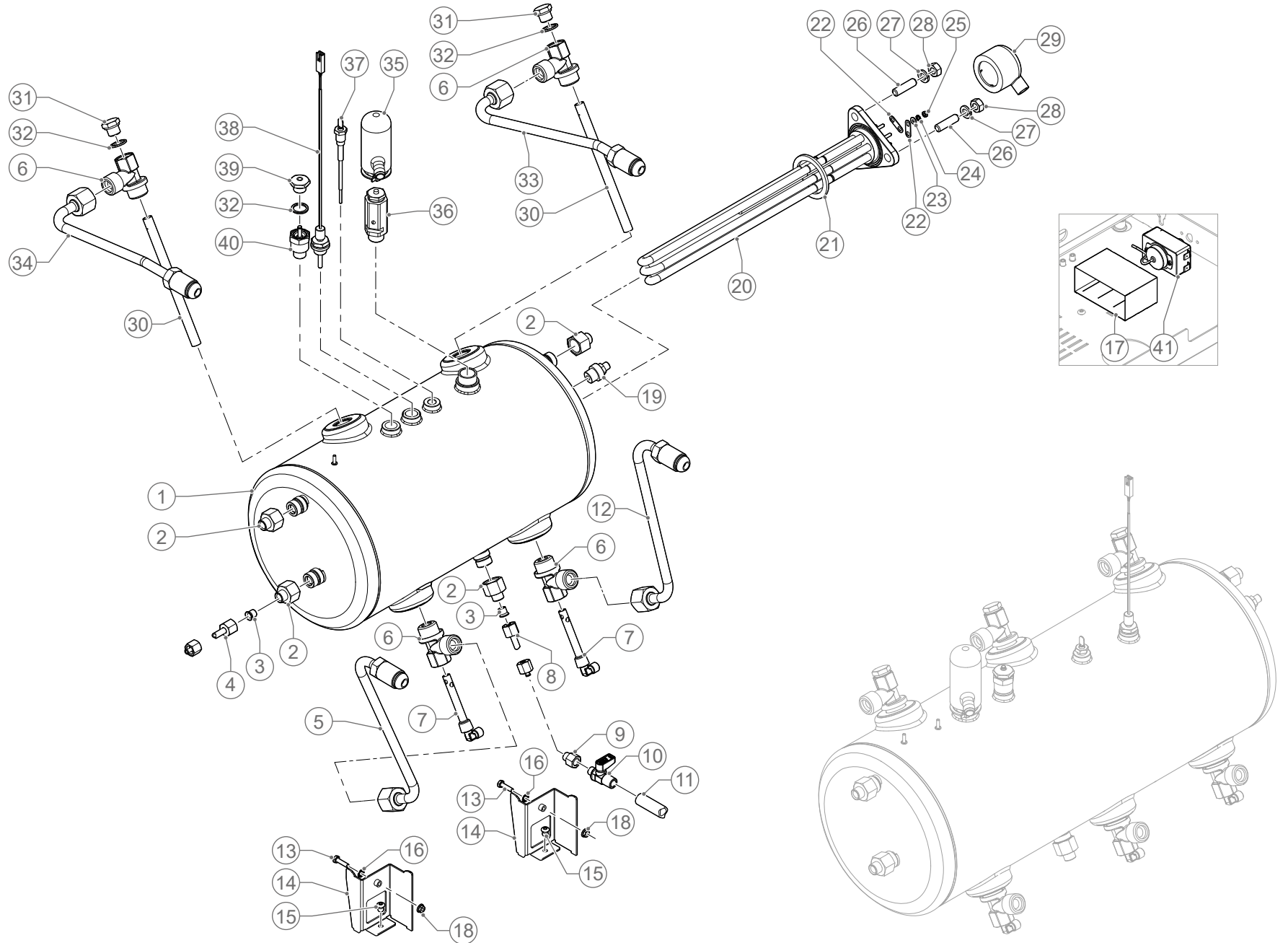








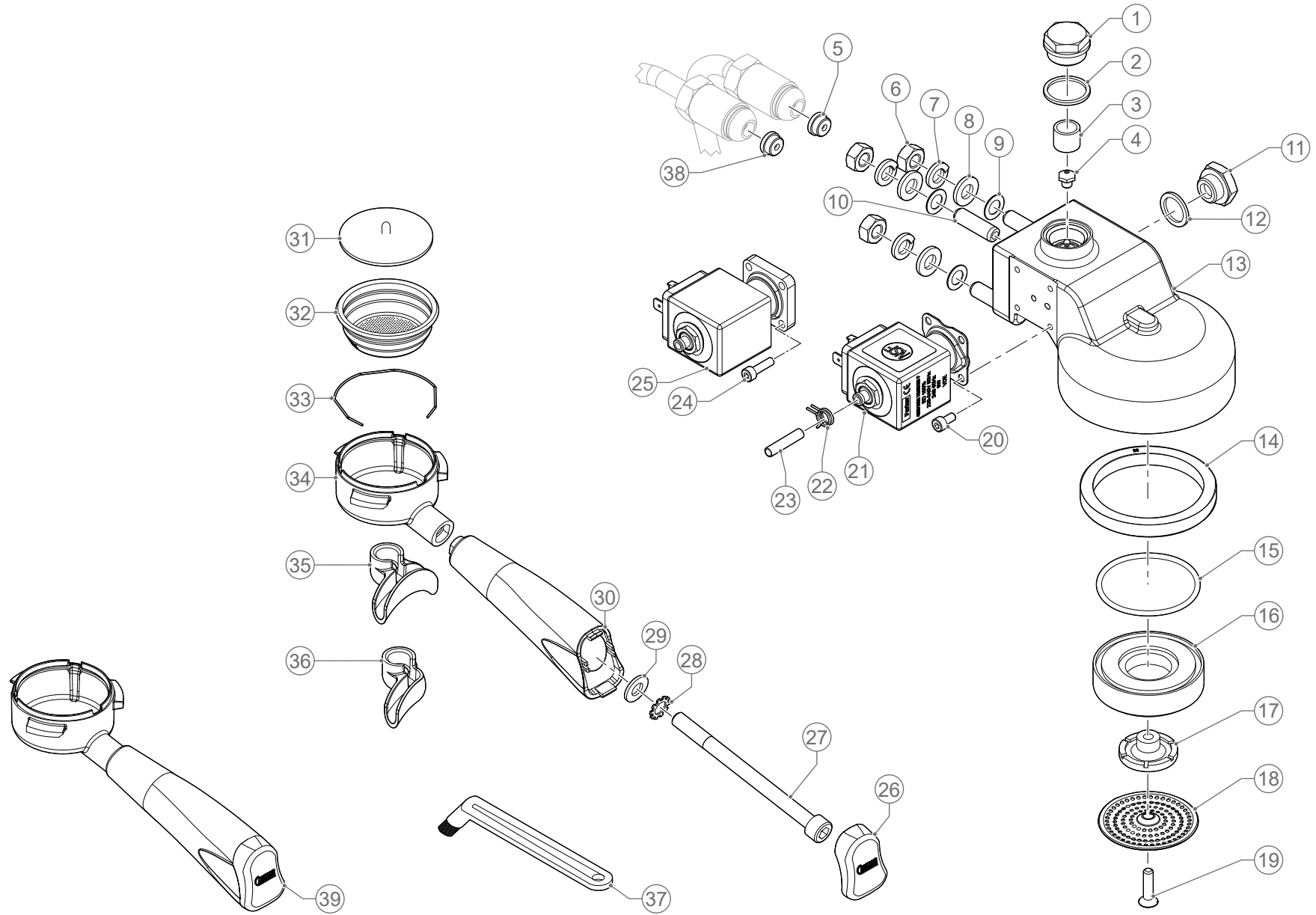


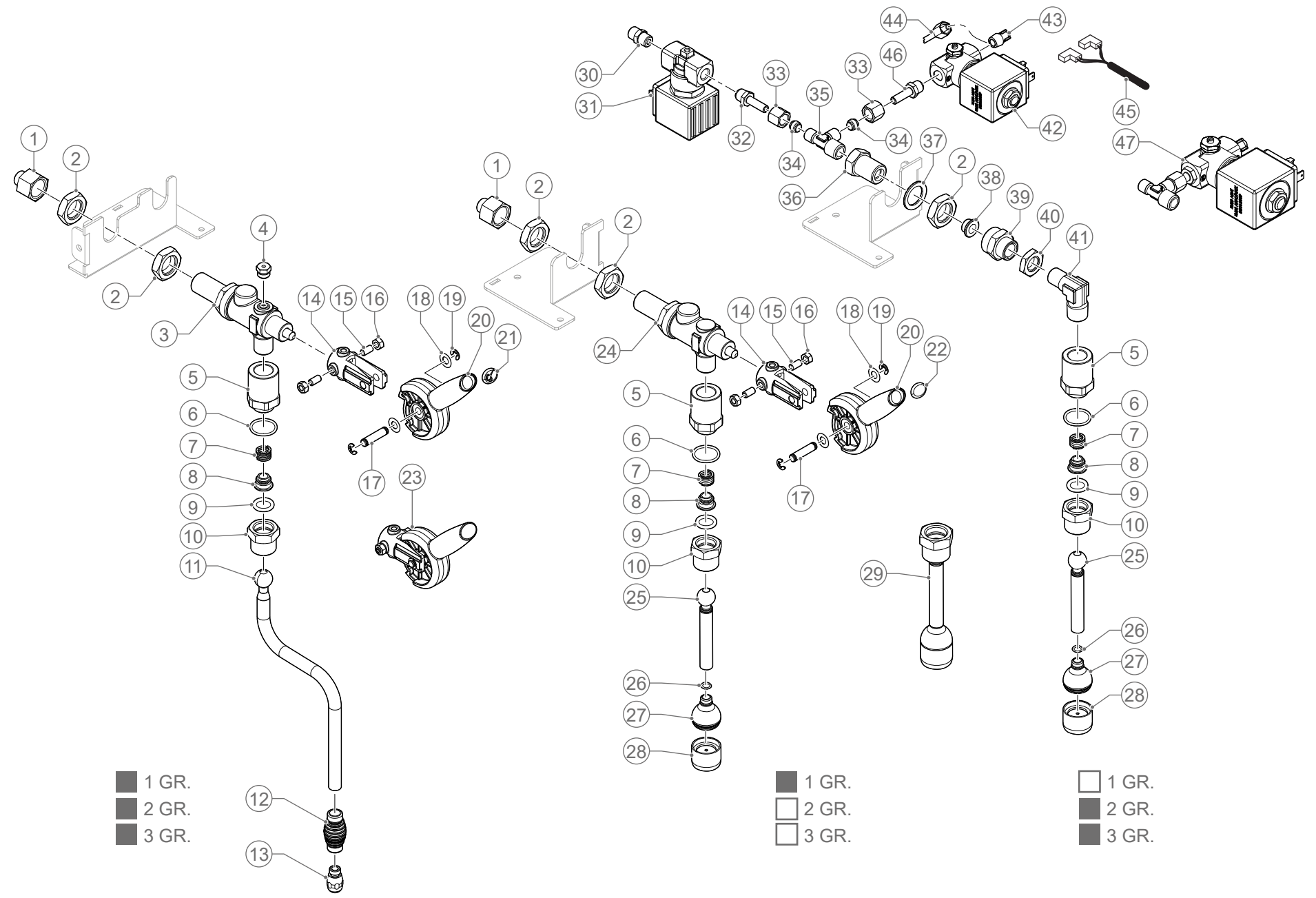


BOILER 2/3 GR (NT.05622-00)

POS.	1 GR		2 GR		3 GR		CODE	DESCRIPTION
	▼	▲	▼	▲	▼	▲		
1			■	■			02.05058	BOILER
					■	■	02.05060	BOILER
2			■	■	■	■	97.05010.RI	BICONIC-STRAIGHT COUPLER FITTING Ø8 3/8F
3			■	■	■	■	97.00136	REDUCTION Ø6 FOR COUPLER FITTING Ø8
4			■	■	■	■	97.05020	TIGHTENING NUT M12 TUBE 6
5			■	■	■	■	02.05039	LEFT LOWER EXCHANGER TUBE
6			■	■	■	■	22.01420	T-COUPLER FITTING MMF 1/2 1/2 1/4
7			■	■	■	■	02.02370	INJECTOR TUBE
8			■	■	■	■	01.05797	BOILER DISCHARGE TUBE ASSEMBLY
9			■	■	■	■	97.00089	BICONIC-STRAIGHT COUPLER FITTING Ø6 1/8F
10			■	■	■	■	95.05048.00.19	BALL VALVE MM 1/4 1/8
11			■	■	■	■	84.00010	SILICONE TUBE Ø14x2
12			■	■	■	■	02.05037	MIDDLE/RIGHT LOWER EXCHANGER TUBE
13			■	■	■	■	91.00209	STAINLESS STEEL TE SCREW M4x16
14			■	■	■	■	11.05228	BOILER SUPPORT
15			■	■	■	■	94.00083	SHEAR RIVET Ø4,8x10 UNI 9200
16			■	■	■	■	93.00002	TOOTHED WASHER Ø4
17			■	■	■	■	11.05262	SAFETY THERMOSTAT SUPPORT
18			■	■	■	■	92.00018	FLANGED NUT M4
19							97.00091	BICONIC-STRAIGHT COUPLER FITTING Ø6 1/8M
20			■	■			96.05126.00.42	3-ELEMENT RESISTANCE 120V 1800W
			■	■			96.05100	3-ELEMENT RESISTANCE 230V 2800W
			■	■			96.05112.00.45	3-ELEMENT RESISTANCE 200V 3200W
			■	■			96.05160	3-ELEMENT RESISTANCE 230V 3500W
					■	■	96.05123	3-ELEMENT RESISTANCE 230V 4000W
21			■	■	■	■	88.00045	TEFLON GASKET 51x39.5x3
22			■	■	■	■	95.01606	JUMPER FOR FLANGE RESISTANCE
23			■	■	■	■	93.00053	RESISTANCE FLAT WASHER
24			■	■	■	■	93.00013	TOOTHED WASHER ZN D.3
25			■	■	■	■	92.00005	BRASS NUT M3

POS.	1 GR		2 GR		3 GR		CODE	DESCRIPTION
	▼	▲	▼	▲	▼	▲		
26			■	■	■	■	91.00158	FLAT GRUB SCREW M8x25
27			■	■	■	■	93.00006	SPLIT SPRING WASHER Ø8
28			■	■	■	■	92.00051	BRASS NUT M8x1.25
29			■	■	■	■	37.00489	RESISTANCE PROTECTION
30			■	■	■	■	02.02371	SUBMERGED TUBE
31			■	■	■	■	22.00741	CAP M 1/4
32			■	■	■	■	95.01166	COPPER GASKET 14x18x1,5
33			■	■	■	■	02.05038	MIDDLE/RIGHT UPPER EXCHANGER TUBE
34			■	■	■	■	02.05040	LEFT UPPER EXCHANGER TUBE
35			■	■	■	■	37.00865	SAFETY VALVE PROTECTION
36			■	■	■	■	97.00148	SAFETY VALVE
37			■	■	■	■	96.00685	LEVEL PROBE
38			■	■	■	■	96.05360	TEMPERATURE PROBE
39			■	■	■	■	01.00504.00.19	ANTI-VACUUM VALVE
40			■	■	■	■	22.05028.RI	COUPLER FITTING M1/4 FOR ANTI-VACUUM VALVE
41			■	■	■	■	96.05154	SINGLE-PHASE SAFETY THERMOSTAT
					■	■	95.01594	THREE-PHASE SAFETY THERMOSTAT





LA CARIMALI

Carimali S.p.A.
con socio unico
Via Industriale, 1
Chignolo d'Isola (BG)
24040 - ITALY

 +39 035 4949555
 +39 035 905447
 info@carimali.com
 carimali.com

